

# TELEMATICS DEVICE DATA SHEET

## OEM DEVICES

### AEMP 1 Data Available\*

### AEMP 2 Data Available\*

<b>Equipment Information</b> make model serial number/ VIN
<b>Location</b> date and time latitude & longitude altitude (feet, inches, meters)
<b>Operating Hours</b> date and time data reset date and time cumulative operating hours
<b>Fuel Used - Cumulative</b> date and time units of fuel cumulative fuel used data reset date and time
<b>Fuel Used - Last 24 hours</b> date and time units of fuel fuel used in past 24 hours
<b>Distance Traveled</b> date and time unit of distance odometer data reset date and time

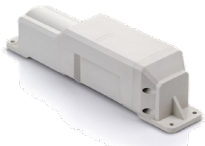
<b>Equipment Information</b> make model serial number/ VIN PIN	<b>Fuel Remaining</b> date and time units of fuel percentage
<b>Location</b> date and time latitude & longitude altitude (feet, inches, meters)	<b>Diesel Exhaust Fluid Remaining</b> date and time percentage
<b>Operating Hours</b> date and time data reset date and time cumulative operating hours cumulative operating hours date and time cumulative idle hours date and time cumulative idle hours	<b>Load Count</b> date and time cumulative count avg load factor in past 24 hours
<b>Fuel Used - Cumulative</b> date and time units of fuel cumulative fuel used data reset date and time	<b>Payload Count - Cumulative</b> date and time payload units payload (actual value)
<b>Fuel Used - Last 24 hours</b> date and time units of fuel fuel used in past 24 hours	
<b>Distance Traveled</b> date and time unit of distance odometer data reset date and time	

\*AEMP data availability depends on OEM device.

†Engine events dependent on vehicle/ equipment specifications, device type, and OEM configurations.

All data points are dependent on the vehicle/ equipment and other variables. Fleet Intelligence displays the most commonly used data points based on vehicle/ equipment type. The information on this document is subject to change without notice. More data may be available for the devices you select. Call 877-57FLEET with questions.

# TELEMATICS DEVICE DATA SHEET



TTU - 720



TTU - 2830



LMU - 3030



LMU - 2630

MACHINE COMPATIBILITY			
trailers, generators, compressors, light towers, etc.	heavy equipment	light duty vehicles	light duty vehicles
CONNECTORS & ACCESSORIES			
battery powered	3 wire install backup device battery	OBDII Port backup device battery optional T-Harness cable or straight cable (concealment)	3 wire install backup device battery optional power harness (key fob)
STANDARD DATA			
transmits once daily GPS altitude	2 min intervals faster intervals avail towing GPS altitude backup battery level derived engine hours 1 extra input avail	2 min intervals faster intervals avail towing GPS altitude backup battery level derived engine hours 1 extra input avail GPS mileage	2 min intervals faster intervals avail towing GPS altitude backup battery level derived engine hours extra inputs avail GPS mileage bluetooth avail
DRIVER BEHAVIOR			
	speed speed events road type odometer power take off avail hard stop avail posted speed limit	speed speed events road type odometer power take off hard stop posted speed limit	speed speed events road type odometer power take off hard stop posted speed limit

\*AEMP data availability depends on OEM device.

†Engine events dependent on vehicle/ equipment specifications, device type, and OEM configurations.

All data points are dependent on the vehicle/ equipment and other variables. Fleet Intelligence displays the most commonly used data points based on vehicle/ equipment type. The information on this document is subject to change without notice. More data may be available for the devices you select. Call 877-57FLEET with questions.

# TELEMATICS DEVICE DATA SHEET



LMU - 3640



TTU - 3640

Devices with engine connections (LMU - 3030, LMU - 3640 & TTU - 3640) are able to provide the following:†

## MACHINE COMPATIBILITY

heavy duty on road vehicles

heavy equipment

## CONNECTORS & ACCESSORIES

Jbus (J1708 6pin or J1939 9pin)  
device battery levels  
external antenna  
optional power harness

Jbus (J1939 9pin)  
device battery levels  
external antenna  
optional power harness

## STANDARD DATA

2 min intervals  
faster intervals avail  
JPOD  
GPS  
altitude  
backup battery level  
derived engine hours  
extra inputs avail  
DTC alerts  
bluetooth

2 min intervals  
faster intervals avail  
JPOD  
GPS  
altitude  
backup battery level  
derived engine hours  
extra inputs avail  
DTC alerts

## DRIVER BEHAVIOR

speed  
speed events  
road type  
odometer  
power take off  
hard stop  
posted speed limit

speed  
speed events  
road type  
odometer  
power take off  
hard stop  
posted speed limit

## ENGINE EVENTS REPORTED IN REAL TIME

total engine hours	engine oil temp
total fuel	battery voltage
total idle fuel	high resolution odometer
engine speed	total idle hours
seat belt used	odometer
engine coolant temp	location
air bag sensor	barometric pressure

## ENGINE EVENTS REPORTED DAILY

total fuel used	max engine coolant temp
avg fuel rate	avg engine coolant temp
avg engine torque	min engine fuel temp
min engine speed	max engine fuel temp
max engine speed	avg engine fuel temp
avg engine speed	min ambient air temp
min def concentration	max ambient air temp
max def concentration	avg ambient air temp
avg def concentration	min aux temp
min engine oil pressure	max aux temp
max engine oil pressure	avg aux temp
avg engine oil pressure	engine total hours
min engine oil temp	engine idle hours
max engine oil temp	engine oil level
avg engine oil temp	engine coolant level
min engine coolant temp	

\*AEMP data availability depends on OEM device.

†Engine events dependent on vehicle/ equipment specifications, device type, and OEM configurations.

All data points are dependent on the vehicle/ equipment and other variables. Fleet Intelligence displays the most commonly used data points based on vehicle/ equipment type. The information on this document is subject to change without notice. More data may be available for the devices you select. Call 877-57FLEET with questions.